

# rLaminin-5

## Laminin-5, recombinant from human

Host cell : HEK293

### Description

Laminin-5 (Lm5) is an extracellular matrix (ECM) protein, which is produced by the combination of  $\alpha 3$ ,  $\beta 3$  and  $\gamma 2$  chains.

Lm5 has unique biological activities. It strongly promotes cellular adhesion, scattering and migration of various types of cells compared with other laminins and other ECM proteins.

### Specification

#### Molecular weight

450 kDa

#### Purity

>95% by SDS-PAGE analysis

#### Concentration

20  $\mu\text{g/ml}$

30 mM Tris-HCl (pH 8.0), 0.0025% Brij 35,  
0.05% CHAPS, 0.05% TFA

#### Biological Activity

Measured by cell adhesion assay

#### Storage

Store below  $-70^{\circ}\text{C}$

Avoid repeated freeze-thaw cycles.

#### Usage

Keep product on ice before use.

#### References

- 1) Kariya, Y., et al. (2002) *J. Biochem.* **132**, 607-612.
- 2) Hashimoto, J., et al. (2006) *Stem Cells* **24**, 2346-2354.

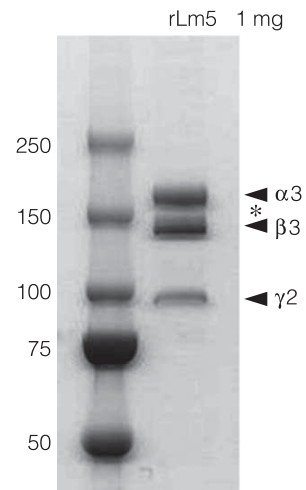


Fig. 1 SDS-PAGE of purified rLm5 on 5-20% gradient gel under reducing conditions : Each chain of rLm5 was stained with coomassie brilliant blue. Asterisk : Minor isoform of processed  $\alpha 3$  chain and non-processed  $\gamma 2$  chain.

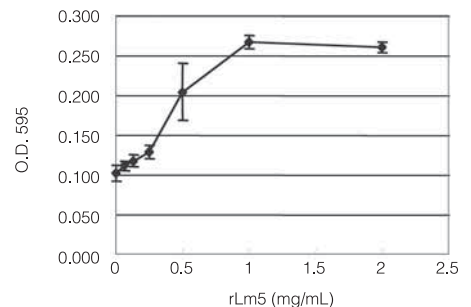


Fig. 2 Cell adhesion assay : BRL cells were fixed and stained after culture for 1 hour on the plate coated with various concentrations of rLm5. Adhesion activity was measured by spectrometer (595 nm).

#### OYC No./Package

OYC No.	Package
47200000	2 $\mu\text{g}$
47201000	10 $\mu\text{g}$ (2 $\mu\text{g} \times 5$ )
47198900	Bulk